

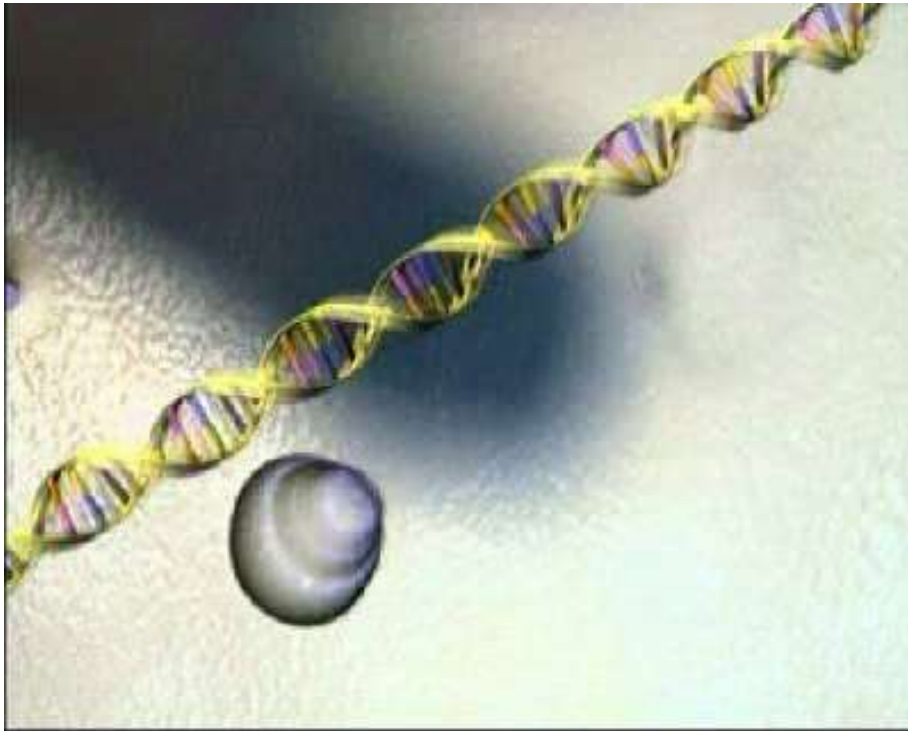


Brazilian agricultural structure

Class Year income* (USD)	Number of Farms	Farms (%)	Area (ha)	Area (%)	Average area (%)	Gross Value Product (%)
 A/B 24,950	300,963	5.8	128,420,746	38.5	426.6	78.8
C 5,650 to 24,950	796,173	15.4	60,332,019	18.1	75.7	13.6
 D/E 5,650	3,645,344	70.4	109,940,992	32.9	30.1	7.6
ND	433,156	8.4	34,986,270	10.5	-	-
Total	5,175,636	100	333,680,037	100	-	100

**Gross Value Product = Gross Liquid Product + Production cost;
Data source: Agricultural Census, Brazil, 2006.*

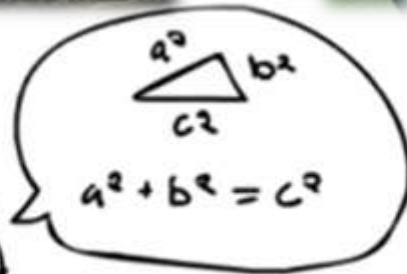












Transformation Function

$$X_T, Y_T, Z_T, \omega, \phi, \kappa$$

