

SCHOOL OF PHARMACEUTICAL SCIENCES UNIVERSITY OF SÃO PAULO
DEPARTMENT OF CLINICAL CHEMISTRY AND TOXICOLOGY
SKIN BIOLOGY GROUP
UNIVERSITY CAMPUS – SÃO PAULO - BRASIL



SKIN BIOLOGY GROUP

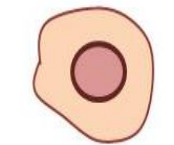
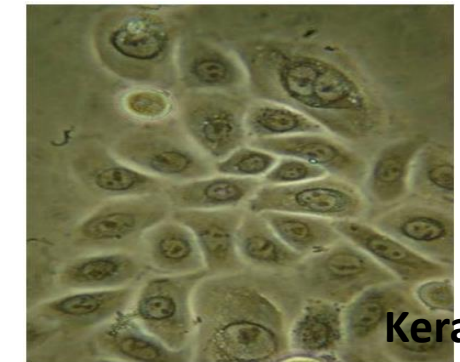
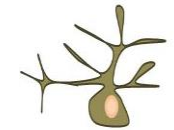
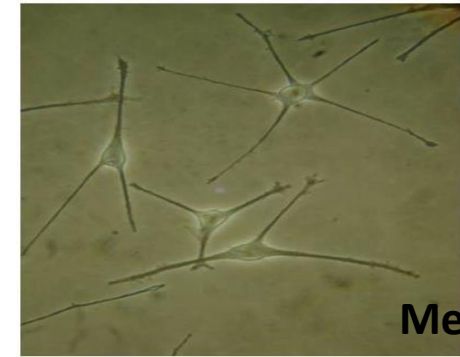
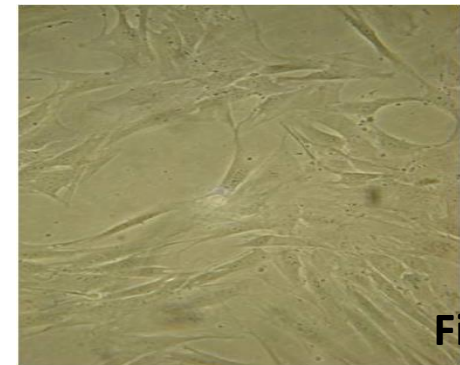
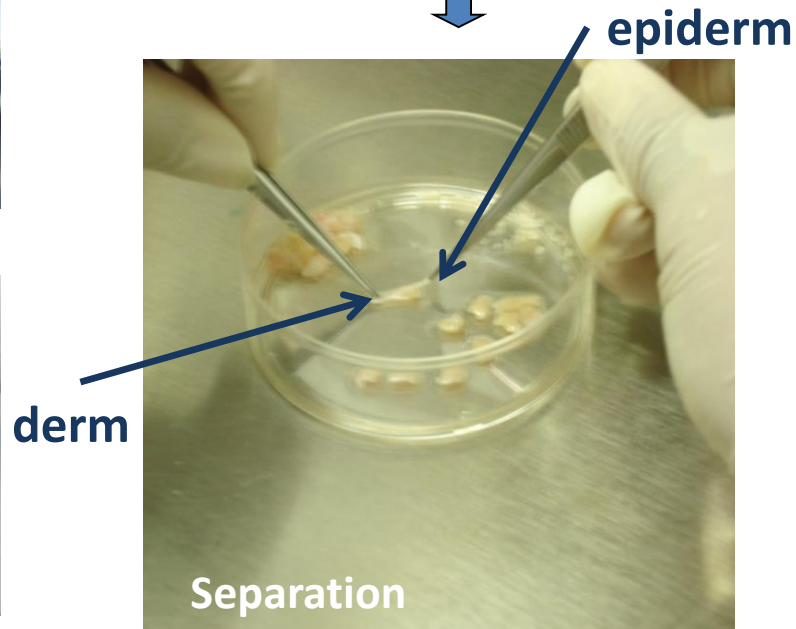
3D models for skin biology and pathophysiology research
Full skin or Epiderm Equivalent

Melanoma chemotherapeutic resistance



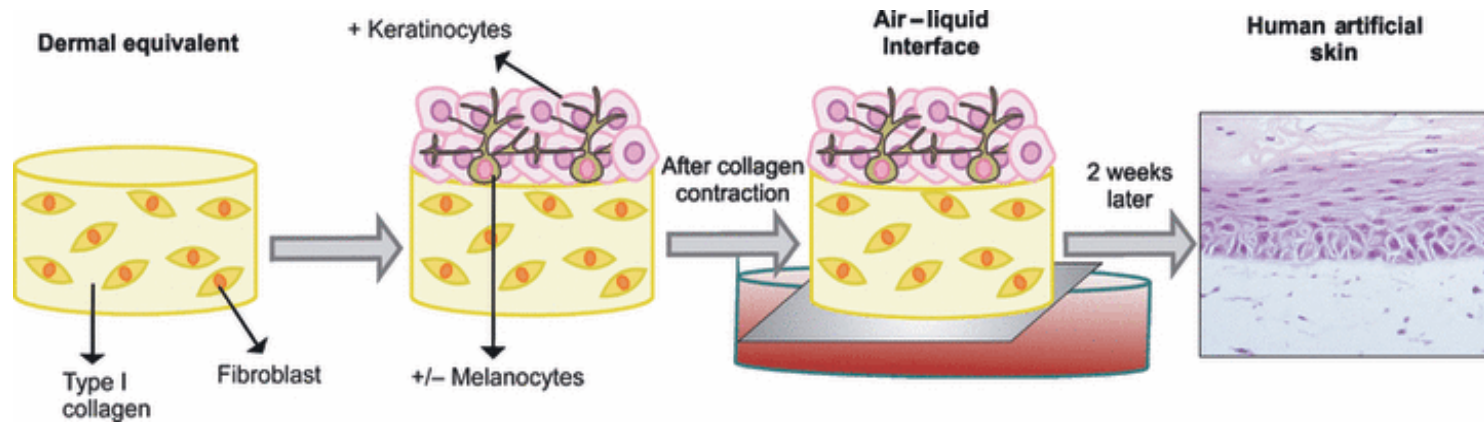
PI – Prof. Silvyta Stuchi Maria-Engler

RECONSTRUCTED FULL SKIN OR EPIDERM EQUIVALENT



SKIN BIOLOGY GROUP

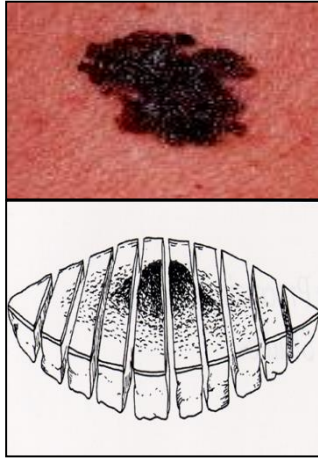
3D models for skin biology and pathophysiology research Full skin or Epiderm Equivalent



- Epiderm Equivalent for Irritation and Corrosion Testing according OECD guidelines
- Glycated reconstructed full skin as platform to study pathogenesis of skin aging and diabetes
- Atopic dermatitis Epiderm Equivalent
- Immunocompetent Epiderm Equivalent
- Full skin for Melanoma invasion research
- Solar irradiation for photoprotective agents research
- Pigmented Skin with different skin phototypes

SKIN BIOLOGY GROUP

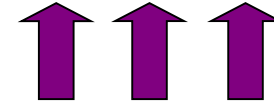
Melanoma cells - primary or metastatic



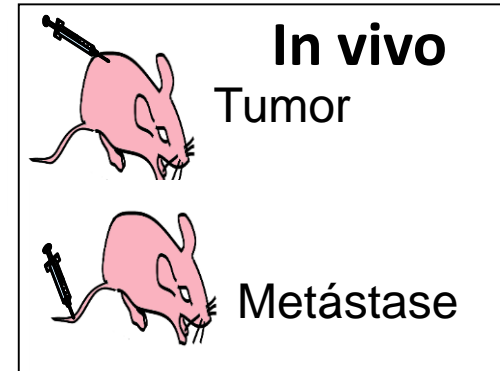
Gene Expression
IF, IHC
cDNA Microarrays
Tissue arrays



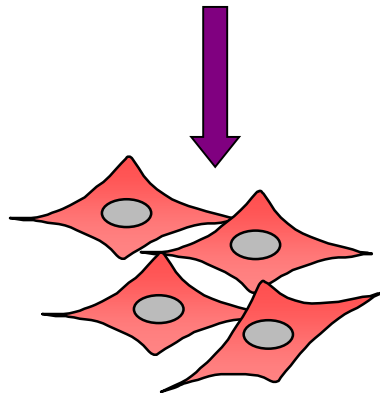
Candidate genes



Transformation
Chemoresistance



In vitro melanoma models
Gene transference
Reconstructed skin - Invasion



Tumor cells
Normal melanocytes



Functional Studies



Silvia Stuchi Maria-Engler - silvia@usp.br
Silvia B.M.Barros – sambarros@usp.br

THANKS FOR YOUR ATTENTION !!!